

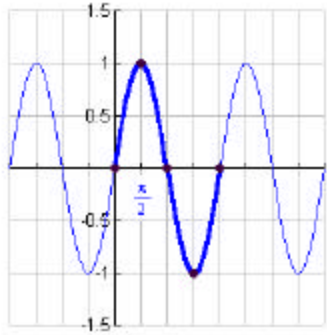
Graphs of the Six Trigonometric Functions

$y = \sin x$

Domain:
All Reals

Range:
[-1, 1]

Period: 2π

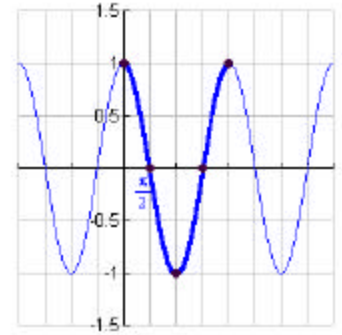


$y = \cos x$

Domain:
All Reals

Range:
[-1, 1]

Period: 2π

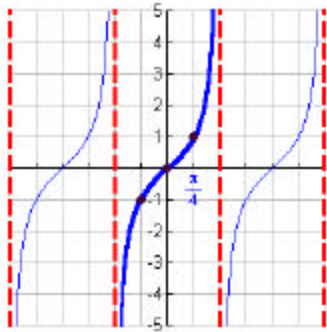


$y = \tan x$

Domain:
All $x \neq \frac{\pi}{2} + n\pi$

Range:
All Reals

Period: π

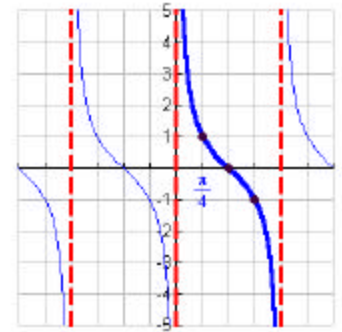


$y = \cot x$

Domain:
All $x \neq n\pi$

Range:
All Reals

Period: π

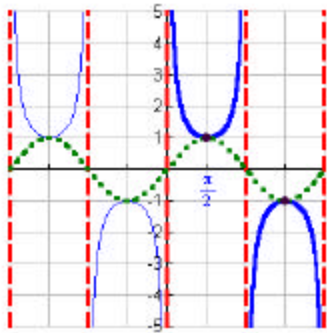


$y = \csc x$

Domain:
All $x \neq n\pi$

Range:
 $(-\infty, -1] \cup [1, \infty)$

Period: 2π



$y = \sec x$

Domain:
All $x \neq \frac{\pi}{2} + n\pi$

Range:
 $(-\infty, -1] \cup [1, \infty)$

Period: 2π

