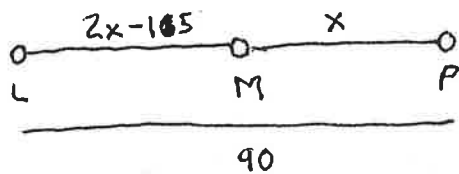


# Unit 1 Review Answer Key

- ① B - D is vertex, must have rays + must have points
- ② D - segment, do not put points on the line above the name
- ③ A - a plane intersects another along an ongoing line
- ④ C - name the endpoint first, the ray must point right in the name
- ⑤ C - mark the  $90^\circ$  angle and the segment as evenly split.
- ⑥ False (B) - the angles add to  $180^\circ$  and are supplementary,  $90^\circ$  is complementary
- ⑦ C - c is less than  $90^\circ$ , but not as small as angle B
- ⑧ D - all statements are true
- ⑨ B -  $54^\circ$  is found by taking the larger value and subtracting the smaller.
- ⑩ B - use the equation  $60 - x + 3x - 30 = 70$
- ⑪ C - remember: inscribed = angle bisectors and circumscribed = perpendicular
- ⑫ B - C describes the altitude of a triangle
- ⑬ D - translations do not change the figure and is a slide
- ⑭ C - sketch an example to help you
- ⑮ D - from -2 to 3 is positive or right 5, from 1 to 7 is positive or up 6
- ⑯ D - all statements are true

⑰



$$2x - 105 + x = 90$$

$$3x - 105 = 90$$

$$3x = 195$$

$$x = 65$$

$$M \text{ to } P = x = 65$$

$$L \text{ to } M = 2x - 105 = 2(65) - 105 = 130 - 105 = 25$$

Pg. 71-72 #1-12

1.  $\overline{JK}, \overline{KL}, \overline{LJ}$

2.  $\angle JKL, \angle K LJ, \angle LJK$

3.  $\overleftrightarrow{SQ}, \overleftrightarrow{EN}, \overleftrightarrow{PC}$

4.  $\overrightarrow{MO}, \overrightarrow{MC}, \overrightarrow{MQ}, \overrightarrow{ME}, \overrightarrow{MR}, \overrightarrow{MS}, \overrightarrow{MN}$

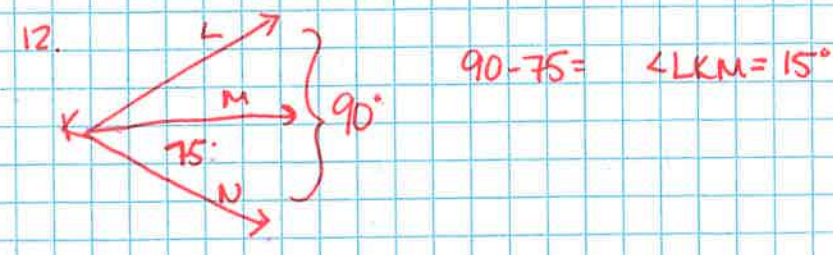
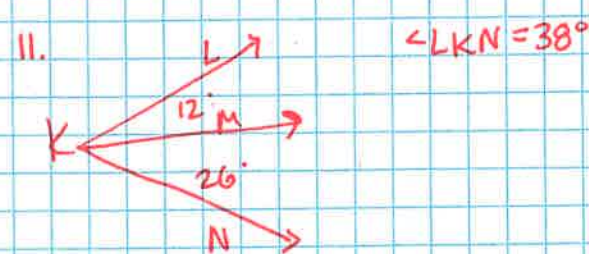
5.  $\overline{CH}=4 \quad \overline{HJ}=4 \quad \overline{JK}=8 \quad \overline{CJ}=8 \quad \overline{CK}=16 \quad \overline{HK}=12$

6.  $\overline{CH} \cong \overline{HJ}, \overline{JK} \cong \overline{CJ}$



9.  $\angle PVQ = 30^\circ$        $\angle QVR = 30^\circ$        $\angle RVS = 35^\circ$        $\angle SVT = 30^\circ$   
 $\angle PVR = 60^\circ$        $\angle QVS = 65^\circ$        $\angle RVT = 65^\circ$   
 $\angle PVS = 95^\circ$        $\angle QVT = 95^\circ$   
 $\angle PVT = 125^\circ$

10.



Pg. 75 - Chapter 1 Test #1-8, 12, 13, 18, 19

Key

1.  $\overleftrightarrow{MN}$
2. M, N, and P  
or M, N, and Q
3. Limon to Rocky Ford = 88 mi  
Rocky Ford to Timpas = 15 mi
4.  $\overline{CF} = 18$
5.  $\overline{BC} = 28$
6.  $32^\circ$
7.  $116^\circ$
8.  $148^\circ$
12.  $18^\circ$
13.  $36^\circ$
18. (3,4) (5,2) (1,0)
19.  $(x,y) \rightarrow (x+4,y)$

Pg. 76-77 #1-7, 12-20

1. b 2. c 3. c 4.  $\overleftrightarrow{AB}$  or  $\overleftrightarrow{BA}$  5.  $\overrightarrow{CD}$  6.  $\overline{EF}$  or  $\overline{FE}$
7.  $\angle HGI$ ,  $\angle IGH$ , or  $\angle G$
12. rotation 13. reflection 14. translation
15. translation 16. reflection
17.  $\overline{AB} = 2$  18.  $\overline{AC} = 7$
19.  $m\angle AVC = 60^\circ$
20.  $m\angle MON = 45^\circ$