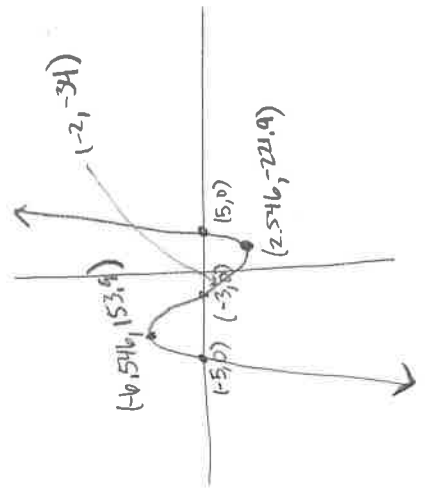


$$(x-5)(2x+6)(x+5)$$

$$(2x+6)(x^2-25)$$

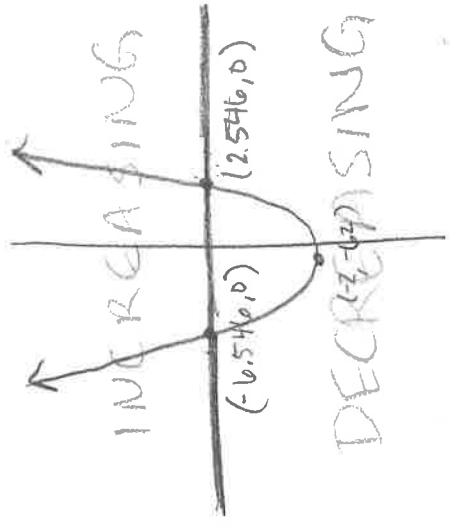
$$f(x) = x^3 + 6x^2 - 50x - 150$$



ORIGINAL

$$x = \frac{-6 \pm \sqrt{186}}{3} \approx 2.546, -6.546$$

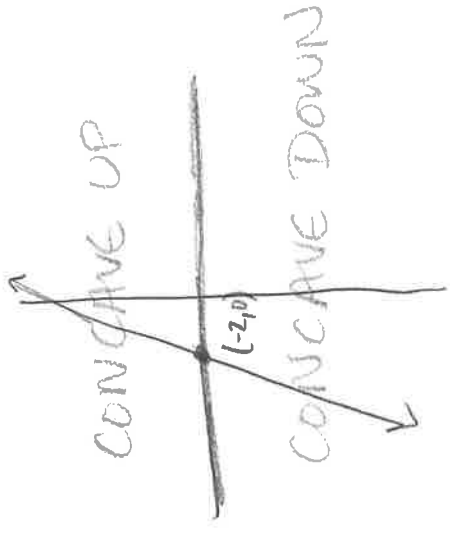
$$f'(x) = 3x^2 + 12x - 50$$



1st DERIVATIVE

$$\text{zeros } x = -2$$

$$f''(x) = 6x + 12$$



2nd DERIVATIVE

Graphical Relationships